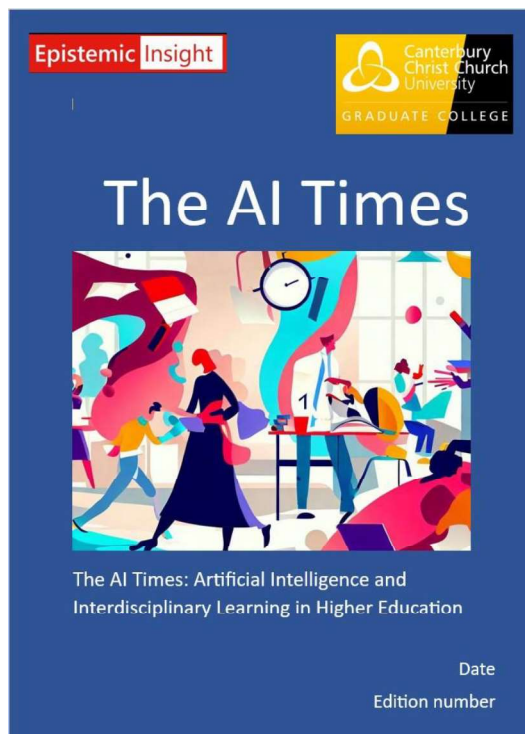


Learning about Science and Religion (LASAR) Research Centre

Investigating GenAI chatbots



Are you curious about the role that GenAI chatbots will or do play in student life? This is your opportunity to help us to find out. We are a university Research Centre investigating opportunities and risks with using GenAI chatbots like Bing Chat, Bard and ChatGPT for Higher Education. We already know that some people use them for therapy, some to write their essays, some are worried about the impacts on jobs while some others say they are tools to boost their careers. Whichever focus you choose to investigate your final output will be an article or illustration for our new university Journal, the AI Times.

You will be offered a choice of projects and the final project you work on will be further refined to fit your skills. For example, you could carry out focus group interviews to find out how other students use or intend to use GenAI chatbots or you could collect and review articles in the media and create an A4 poster display of headlines. Alongside the research you carry out you will be producing a feature article and/or illustration for a new in-house journal, *AI Times: Artificial Intelligence and Interdisciplinary Learning in Higher Education*.

Our research centre has a particular interest in projects that bridge two or more disciplines and it is likely that you will be paired with a student working with another discipline. You will also have access to a mentor/supervisor – Luke Heath, a Masters student specialising in Modern History and co-editor of the journal.

To find out more about our aims as a research centre in Higher Education, visit: <https://futureofknowledge.com/knowledge-labs/>

Contacts: Professor Berry Billingsley: berry.billingsley@canterbury.ac.uk
Luke Heath: l.heath716@canterbury.ac.uk

Opportunities for 4 students