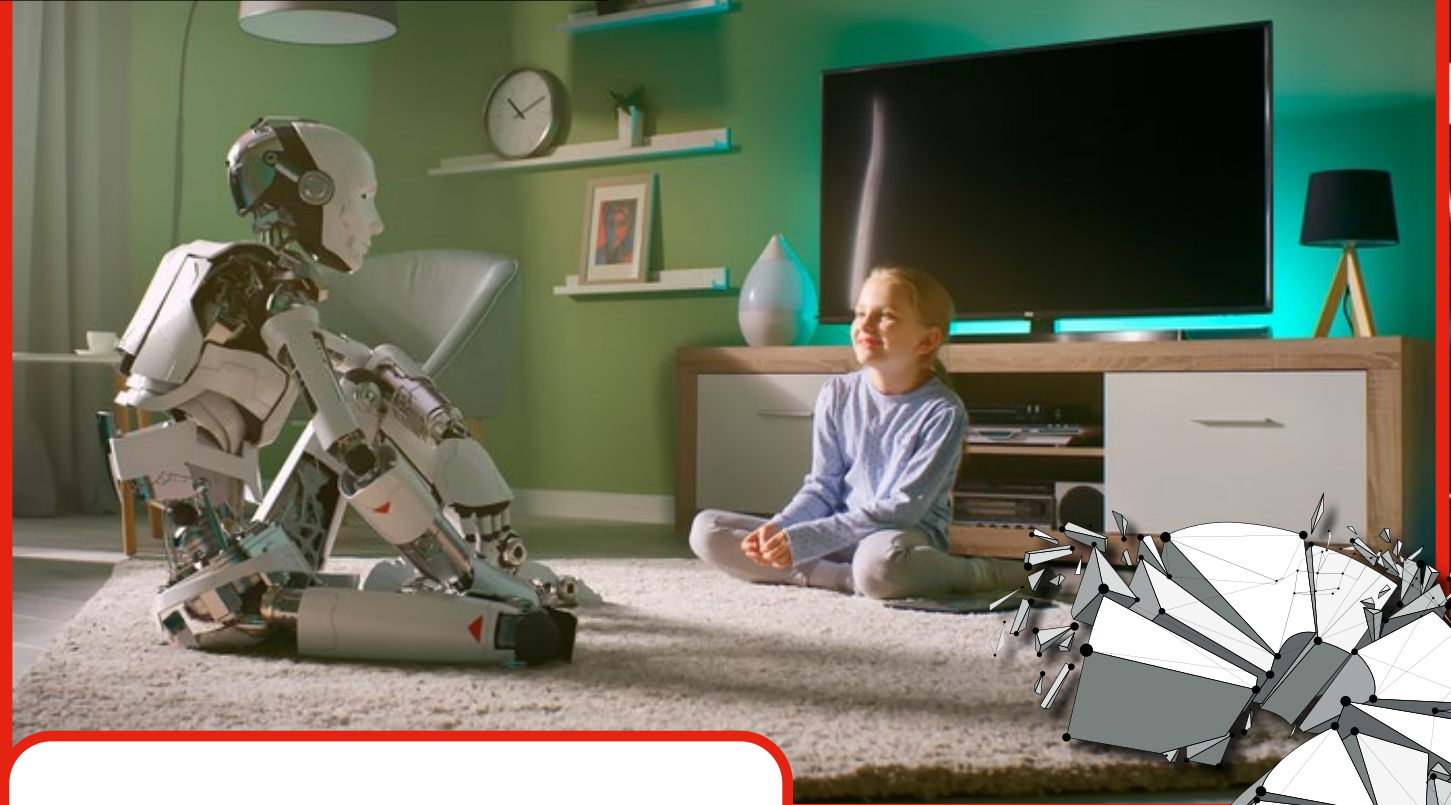


Epistemic Insight

THE FUTURE OF KNOWLEDGE

ARTIFICIAL FRIENDS

Investigating the value of epistemic insight for a wider vision of human flourishing



What does it mean to be good with knowledge?

What does it mean to be smart?

Can an artificial friend alleviate loneliness?

The rapidly increasing advancement in technology such as artificial intelligence, creates both opportunities and challenges in developing our understanding of ourselves and world around us.

Big Questions and real-world problems that touch on issues of human personhood and the nature of reality seldom have simple agreed-upon answers. “What does it mean to be good with knowledge”? “What does it mean to be smart”? “Can an artificial friend alleviate loneliness”? As we start interacting with emerging technologies more frequently, such questions and epistemic puzzles will become further intertwined with these technologies, determining how we approach them and influencing outcomes.

This project invites university students and journalists to ask questions and explore the boundaries between the mind and brain and between the machine and human person. To progress and advance the epistemic agency of students it is necessary to create a stimulating space for multidisciplinary dialogue that leads to new developments in the creation and study of knowledge, improvements in digital transparency, and the creation of innovative solutions to real-world problems.

WHAT'S NEXT?

In the spirit of co-creation, students will have the opportunity to work together exploring questions and epistemic puzzles linked to emerging technologies. We hope to encourage greater transparency by developing an eyes-open approach to knowledge that is often characterised by sensationalism and mis/disinformation, and ultimately, develop a greater level of epistemic insight in students regarding the nature of knowledge that is encountered through interactions with advanced technologies.